

2019
CAN
IN
SPACE
WORKSHOP



2019
CAN
IN
SPACE
WORKSHOP

A stylized graphic of a space station or satellite structure, composed of white and blue geometric shapes. It features a central vertical column, a horizontal beam, and a curved structure resembling a solar panel array or antenna. The graphic is positioned to the right of the text, partially overlapping the words 'CAN' and 'IN'.

Sandi Habinc

Cobham Gaisler

ANNOUNCEMENTS

Wednesday

**Workshop
Opening**

W12



COBHAM



Social Programme



▶ Tuesday

Welcome Reception



▶ Wednesday

Lord Mayor's Reception



▶ Thursday

Gala Dinner





Exhibitors



COBHAM

RENESAS



skylabs



C L Y D E
S F A C E



Sponsors



COBHAM



RENESAS



Rymdstyrelsen
Swedish National Space Agency



GÖTEBORGS
SYMFONIKER



Göteborgs
Stad

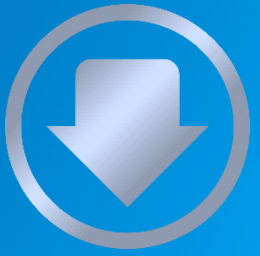
Follow us on Social Media

Your daily update on CAN In Space 2019

#caninspace2019 @caninspace2019



Workshop Presentations



To download CAN in Space 2019 presentations
please visit

www.CANinSpace2019.org





EMERGENCY EXIT

CAN IN SPACE 2019 WORKSHOP





NO GENERAL MEDIA RECORDING ALLOWED AT THIS WORKSHOP.

THANK YOU!



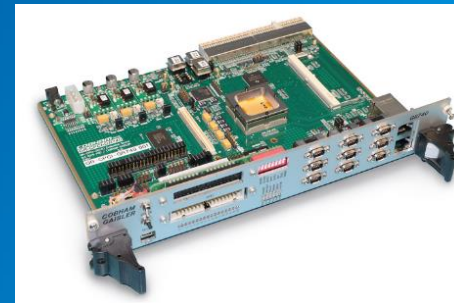
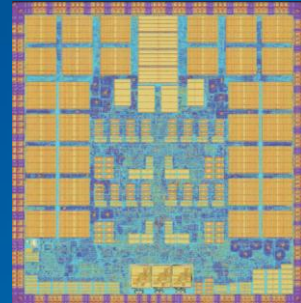
PUT YOUR MOBILE PHONE ON SILENT!

THANK YOU!

GR740 User Day

28 November 2019

Erasmus Auditorium at ESTEC, Noordwijk, The Netherlands



COBHAM



Press Release

Cobham Releases New Instruction
Simulator for Radiation Hardened
Processors



TSIM

Instruction-level Simulator



THANK YOU

CAN IN SPACE 2019 WORKSHOP



2019
CAN
IN
SPACE
WORKSHOP

A stylized graphic of a space station or satellite structure, composed of white and blue geometric shapes. It features a central vertical column, a horizontal beam, and a curved structure resembling a solar panel or antenna array. The graphic is positioned to the right of the text, partially overlapping the words 'CAN' and 'IN'.

2019
CAN
IN
SPACE
WORKSHOP

