



satsearch

The global marketplace for space

ADCSS 2019
November, 2019
ESA/ESTEC
Noordwijk, the Netherlands

Kartik Kumar
Co-founder & CEO
kartik@satsearch.co
+31614634697

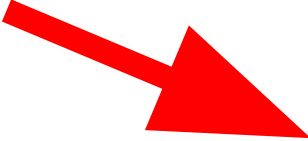


We are digitalizing space commerce

	RWP015	RWP050	RWP100	RWP500
Momentum	0.015 Nms	0.050 Nms	0.10 Nms	0.50 Nms
Max Torque *	0.004 Nm	0.007 Nm	0.007 Nm	0.025 Nm
Mass	0.130 kg	0.24 kg	0.35 kg	0.75 kg
Volume	42 x 42 x 19 mm	58 x 58 x 25 mm	70 x 70 x 25 mm	11 x 11 x 3.8 cm
Voltage	12 VDC	12 VDC	12 VDC	28 VDC
Power @ 1/2 Momentum	< 0.9 W	< 0.9 W	< 0.9 W	< 3.0 W
Power @ Full Momentum	< 1.0 W	< 1.0 W	< 1.0 W	< 6.0 W
Design Life	> 5 years	> 5 years	> 5 years	> 10 years
Static Unbalance * (Fine)	< 1.2 g-mm (0.25 g-mm)	< 1.2 g-mm (0.35 g-mm)	< 1.5 g-mm (0.5 g-mm)	< 3 g-mm (1 g-mm)
Dynamic Unbalance * (Fine)	< 20 g-mm ² (2.5 g-mm ²)	< 20 g-mm ² (2.5 g-mm ²)	< 20 g-mm ² (5 g-mm ²)	< 25 g-mm ² (10 g-mm ²)

	RW1	RW4	RW8
Momentum	1.0 Nms	4.0 Nms	8.0 Nms
Max Torque *	0.1 Nm	0.3 Nm	0.3 Nm
Mass	0.75 kg	3.0 kg	4.1 kg
Volume	11 x 11 x 3.8 cm	17 x 17 x 7 cm	19 x 19 x 9 cm
Voltage	28 VDC	28 VDC	28 VDC
Power @ 1/2 Momentum	< 4.9 W	< 4.9 W	< 4.9 W
Power @ Full Momentum	< 9 W	< 10 W	< 10 W
Design Life	> 10 years	> 10 years	> 10 years
Static Unbalance * (Fine)	< 3 g-mm (1 g-mm)	< 6 g-mm (2 g-mm)	< 8 g-mm (2.8 g-mm)
Dynamic Unbalance * (Fine)	< 25 g-mm ² (10 g-mm ²)	< 150 g-mm ² (75 g-mm ²)	< 200 g-mm ² (100 g-mm ²)

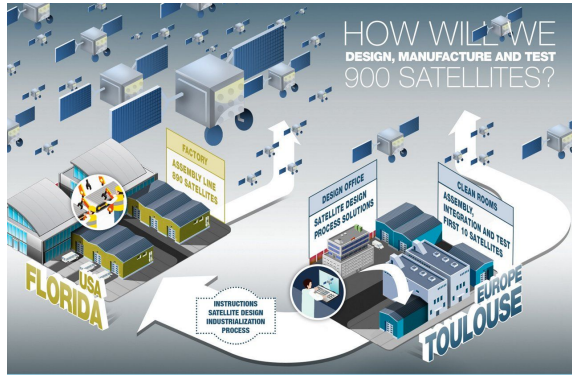
* Custom options are available



```
{
  "attributeClassUuid": "1f8bf2f8-ff20-4f47-ab19-2732a83be1de",
  "description": "",
  "maximumValue": "",
  "measurementUnit": "N m s",
  "minimumValue": "",
  "name": "angular-momentum-storage",
  "productConfiguration": "base",
  "productUuid": "b79236dc-407a-59bb-9215-8bda084cc317",
  "uuid": "3e8755c0-c8f8-4293-912f-51026089bee3",
  "value": "0.015"
},
{
  "attributeClassUuid": "a992c4ca-7889-464f-a3b5-f5bba4d7a26e",
  "description": "Annotated in datasheet: 'Custom options are available'.",
  "maximumValue": "",
  "measurementUnit": "N m",
  "minimumValue": "",
  "name": "maximum-torque",
  "productConfiguration": "base",
  "productUuid": "b79236dc-407a-59bb-9215-8bda084cc317",
  "uuid": "dfba18ef-e9c0-43bd-abe4-c45ada956ede",
  "value": "0.004"
},
}
```

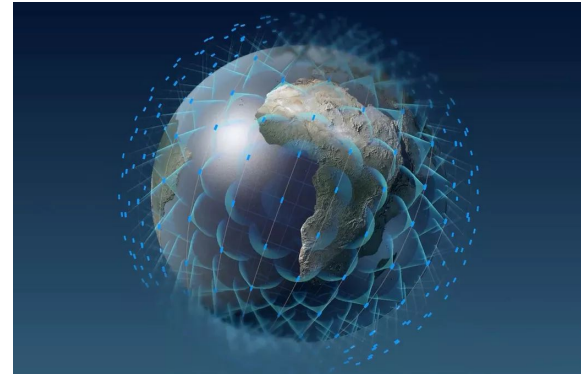


Commercialization trends seen on satsearch



Technology drivers

- Open access to space
- Serial/batch production
- High reliability parts
- Precision control

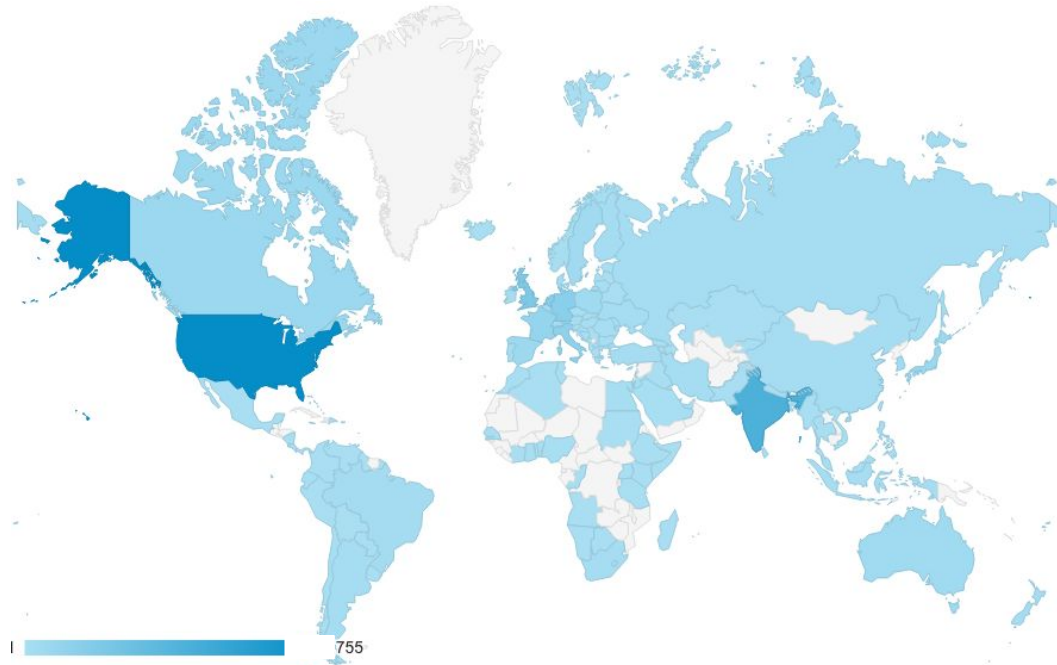


Market drivers

- EO end-user applications
- “Internet Everywhere”
- Smallsats for deep space
- New space-faring nations



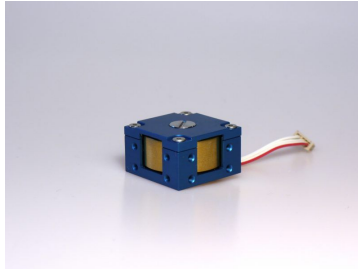
Commercial buyers are global



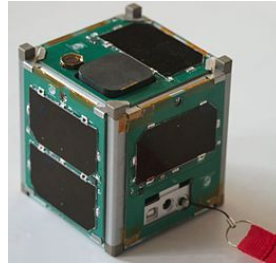
Over the past twelve months, users from 100+ countries have used satsearch



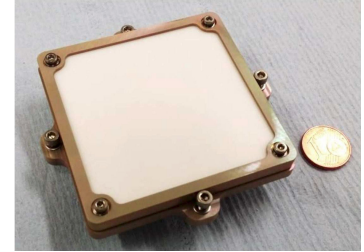
Most popular searches in October



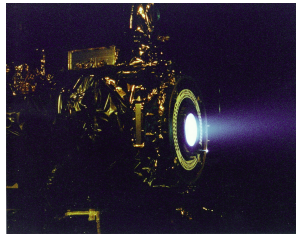
“reaction wheel”



“cubesat”



“x-band”



“electric thruster”



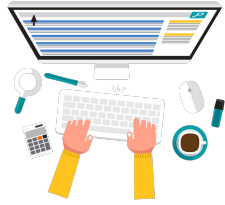
“battery”



“camera”



How do we generate new business for you?



Buyer



Supplier



Driving relevant searches

BLOG

Promotion through dedicated articles



Branding through social media



Positioning through newsletter



Join the global marketplace for space!



For further information, please contact:

Kartik Kumar | kartik@satsearch.co | +31 6 14634697